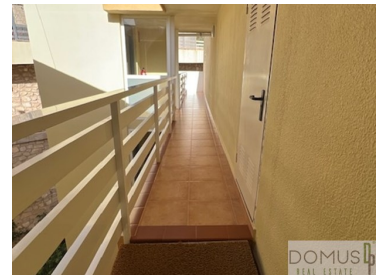




Benidorm - Penthouse



3	2	280		1 199 000 €
Bedrooms	Bathrooms	Area (m ²)	Garage	(EUR €)

Penthouse for sale in Playa Poniente in Benidorm

Spacious and quiet penthouse with panoramic sea views on the beachfront of the Poniente beach area LA CALA.

This fabulous penthouse of 270 square meters built, with unbeatable panoramic views.

The property, facing the sea, on the Poniente beach in Benidorm, has three bedrooms, a very spacious living room with large windows and a central fireplace, a large kitchen with a laundry and ironing area with large storage cupboards, a terrace with BBQ, two bathrooms, one of them en suite with a whirlpool bathtub, storage room, and closed garage space.

It is a UNIQUE and exclusive home at all levels, which will meet the expectations of the most demanding client.

In addition, you will enjoy breathtaking views of the bay of Benidorm and the island you can enjoy the sunrises and sunsets, and its tranquility means that the only night sound is the waves of the sea



DAVID PATRICK

+34 644 360 044

david.patrick@domus-dp.com

T +34 644 360 044 · E info@domus-dp.com

03530 LA NUCÍA
AMI 010203

¹ (Call to national fixed network) | ² (Call to national mobile network)



breaking a few meters from your home.

The location is unbeatable Benidorm is the capital par excellence of the Costa Blanca, the main tourist focus of the entire Levantine coast, where we also find important towns such as Alicante, Torrevieja, Elche, Villajoyosa, Altea, or Calpe. Benidorm is an enigmatic and unique place, known from an urban point of view as the Spanish Manhattan.

An attractive city above all for its microclimate thanks to its southern orientation and the protection exercised by the mountains that surround it and which offers its inhabitants mild winters and pleasant summers. Its privileged location in front of a beautiful bay of two golden sand beaches with crystal clear and warm waters, and the wide range of services, leisure, nearby golf courses, yacht clubs, restaurants, etc... make it a paradise city to live comfortably. Tranquility and fun. This apartment is located in the quietest area of Benidorm, surrounded by skyscrapers, boasts fast communication with the N-322 national road and exit to the Mediterranean Highway. Alicante International Airport is 40 km away and Valencia, City of Arts is 150 km away.



DAVID PATRICK

+34 644 360 044

david.patrick@domus-dp.com

T +34 644 360 044 · E info@domus-dp.com

**03530 LA NUCÍA
AMI 010203**

¹ (Call to national fixed network) | ² (Call to national mobile network)



Property Features

- Heating
- Fitted wardrobes
- Equipped kitchen
- Proximity: Mountain, Beach, Golf course, Shopping, Restaurants, City, Pharmacy
- Orientation: Exterior
- Floors: 4
- Drive way
- Views: Sea views, Mountain views, Beach view, Marina view, City view, Village view, Urbanization view, Garden view
- Video entry system
- Double glazing
- Electric gates
- Walking distance to beach
- Attic
- Internet connection available
- Hydrotherapy Bath
- Security door
- Solar orientation: South
- Terrace
- Air conditioning
- Fireplace
- Electric heating
- BBQ
- Built year: 2002
- Private condominium
- Storage / utility room
- Frontline property
- Lift
- Electric garage gate
- Main drainage
- Central location
- Quiet Location
- Parking space
- Barbecue
- Uninterrupted views
- Mains water
- Garage



DAVID PATRICK

+34 644 360 044

david.patrick@domus-dp.com

T +34 644 360 044 · E info@domus-dp.com

**03530 LA NUCÍA
AMI 010203**

¹ (Call to national fixed network) | ² (Call to national mobile network)